

## Newsletter

Newsletter Page 1 of 1  
2023/24 016 Sent via Arbor

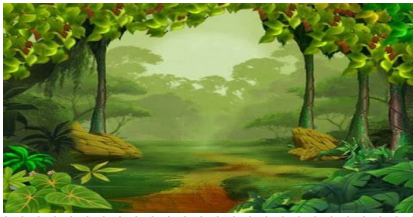
25th January 2024

### Forest School

Robins will be going to the woods for their 4 fun forest school sessions, beginning Wednesday 31st January, then 7th Feb, 14th Feb and 28th Feb.

We are not quite into spring yet so it will still probably be cold. Please wrap up your child warmly. There is no need for a snack as we will have a treat in the woods.

The Robins have a lot to look forward to as they learn about keeping safe in the woods, explore, play games, build dens, look for mini beasts and enjoy toasting marshmallows on an open fire.



### Diary Dates

19th - 23rd Feb Half Term

Mon 26th Feb Inset Day  
School Closed



The children have been enjoying creating music with instruments and singing along to some of their favourite nursery rhymes. Old Macdonald and Wheels on the Bus have been very popular! Outside play has involved the discovery of ice on the tuff trays which the children have then incorporated into their small world play.

We are on the hunt for some dress up items: sunglasses, small shoulder bags, hats, gloves and scarves. If you have any unwanted items at home, we would much appreciate them. Thankyou.



We have an Open Day Friday 9th February at 4.00 - 5.30pm. Please let family and friends know, if they are looking for Nursery spaces. This is a good opportunity to come along and see our Nursery and have a chat with staff. Everyone is welcome.

We would like to welcome Charmaine, Rebecca and Edward to our team of TA's. Edward (Eddy) is our Maintenance manager at York Road and still is. Eddy expressed an interest in joining our team working with the children. Following our recruitment process we are happy to have all these new staff members joining us.

### Voluntary School Fund

We do appreciate a regular half termly contribution of £10.00

Payment can be made under Voluntary contributions on the Arbor app. Many thanks



### PARKING

There has been some potentially dangerous parking near the school. Please be mindful of families and our children when and how you park!

## Phonics

When you are out and about look for logos, shop signs, words in the environment. Does your child recognize any of them?  
Eg Lego, Sainsburys.